



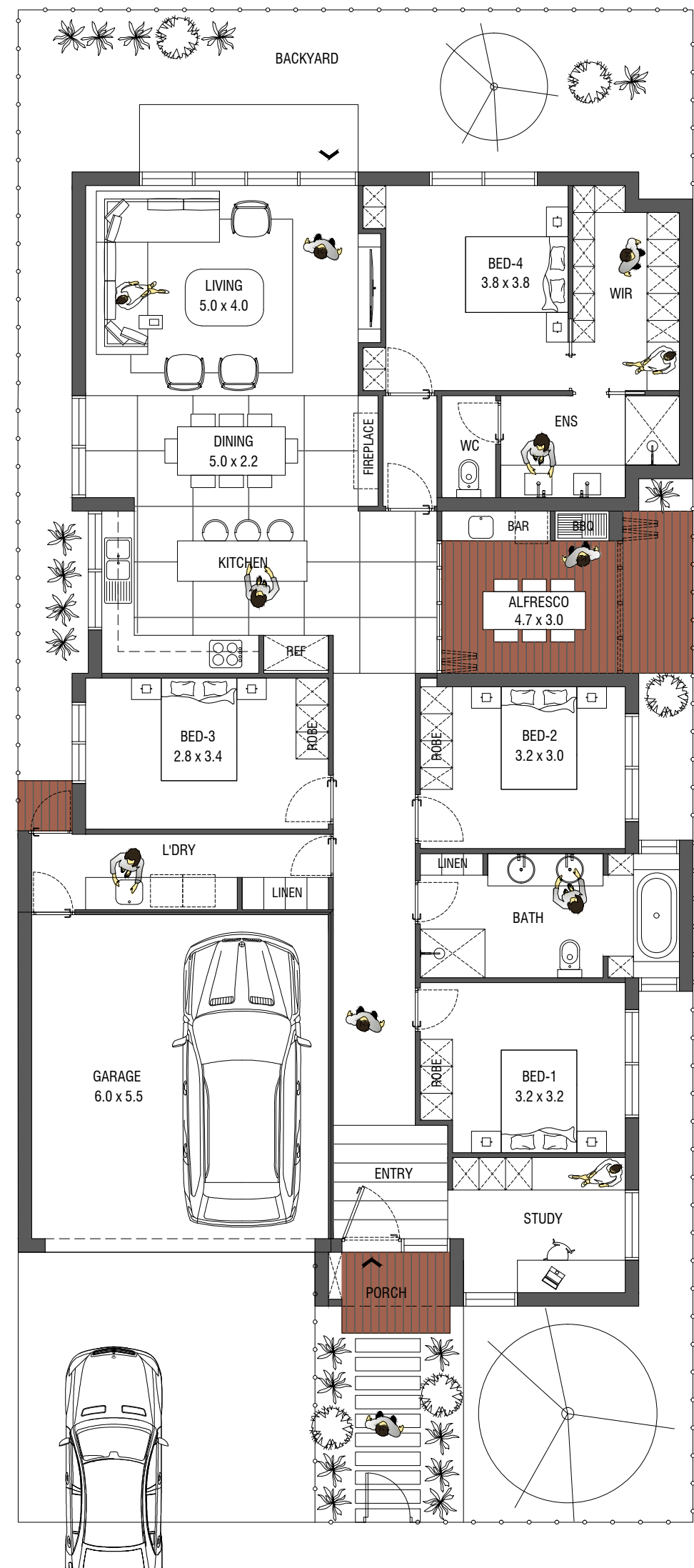


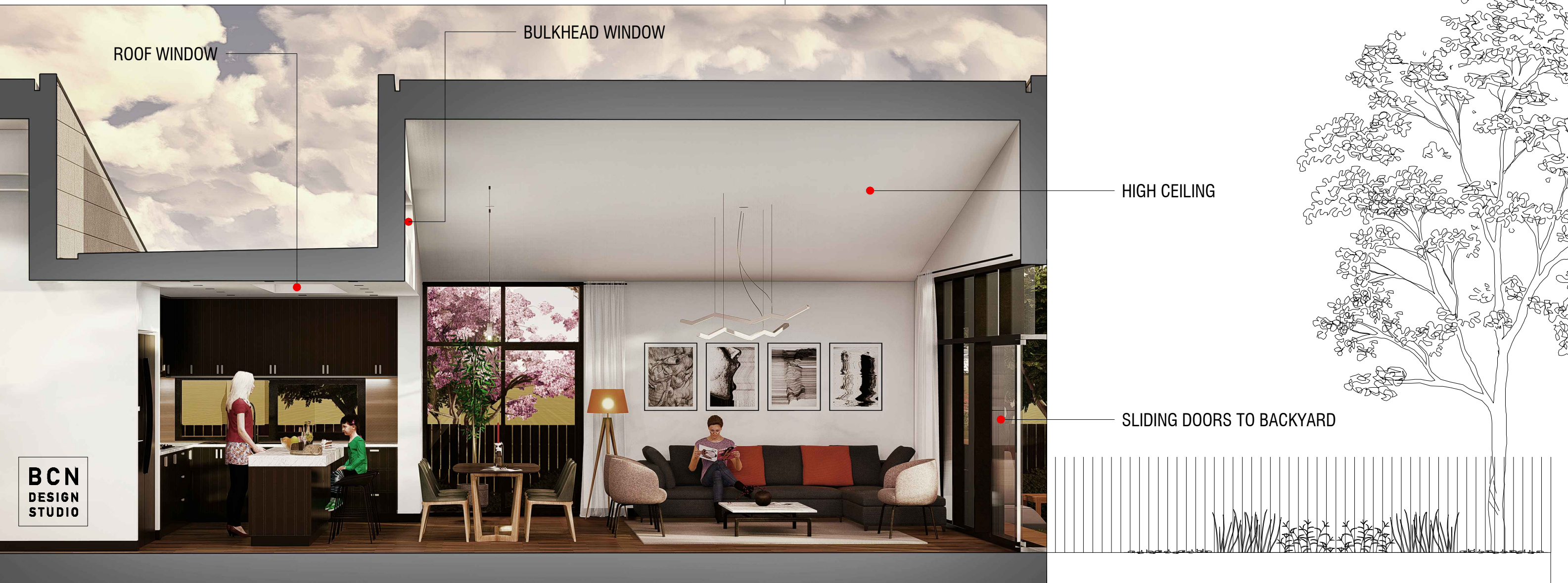
4Bed **2**Bath **1**Living **2**Car

Ground 182.0 m²
 Garage 36.5 m²
 Alfresco 10.5 m² (+3.9 m²)
 Porch 3.0 m²

TOTAL **232.0 m² / 25 sq**

Length 21.0 m
 Width 12.5 m





BCN
DESIGN
STUDIO

KITCHEN

- ROOF WINDOW
- 250 CM ISLAND COUNTER
- ACCESS TO ALFRESCO
- PANAROMIC GARDEN WIEV

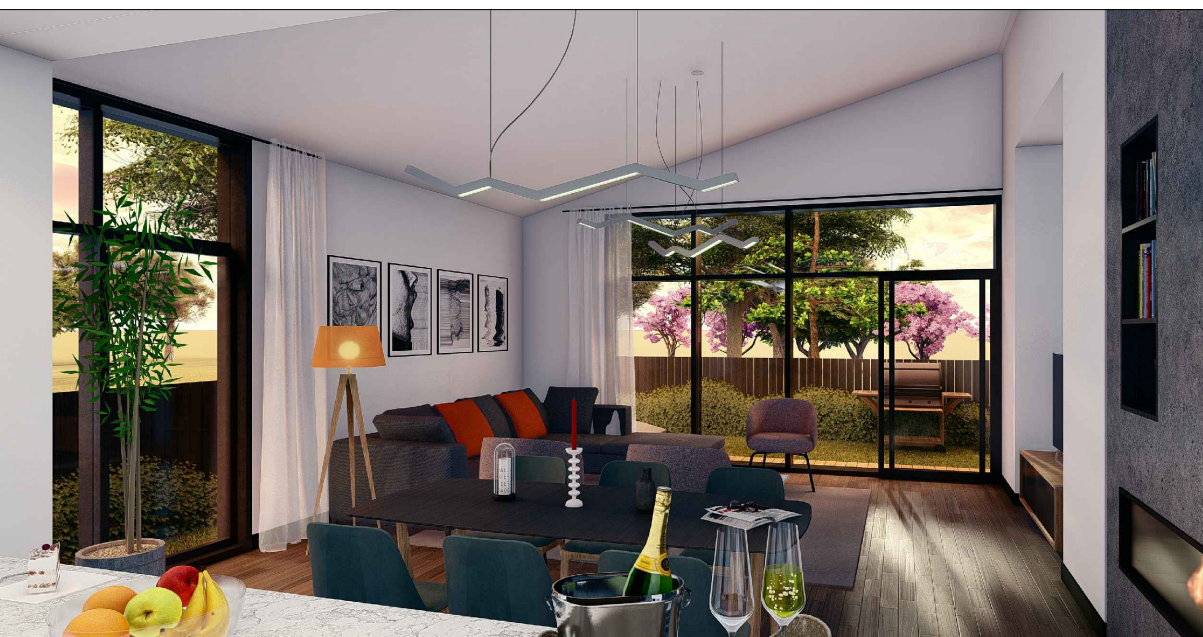
DINING

- HIGH CEILING
- ACCESS TO GARDEN
- BULKHEAD WINDOW
- FIREPLACE

LIVING

- HIGH CEILING UP TO 4M
- 20M2 LIVING AREA
- ACCESS TO BACKYARD
- OPEN SPACE BY SLIDING WINDOWS

BACKYARD



- A** Stone kitchen counter top
- B** Cabinetry
- C** Panaromic kitchen window
- D** Roof window
- E** Folding glass door
- F** Bar counter
- G** BBQ
- H** Timber deck to Alfrescor
- I** Colobond cladding
- J** Bulkhead window
- K** Selected cladding



01 Porch

02 Entrance

03 Study

04 Double Garage
6000 x 5500

05 Bedroom 1
3200 x 3200

06 Bathroom

07 Laundry

08 Bedroom 2
3200 x 3000



09 Bedroom 3
2800 x 3400

10 Kitchen

11 Alfresco
4700 x 3000

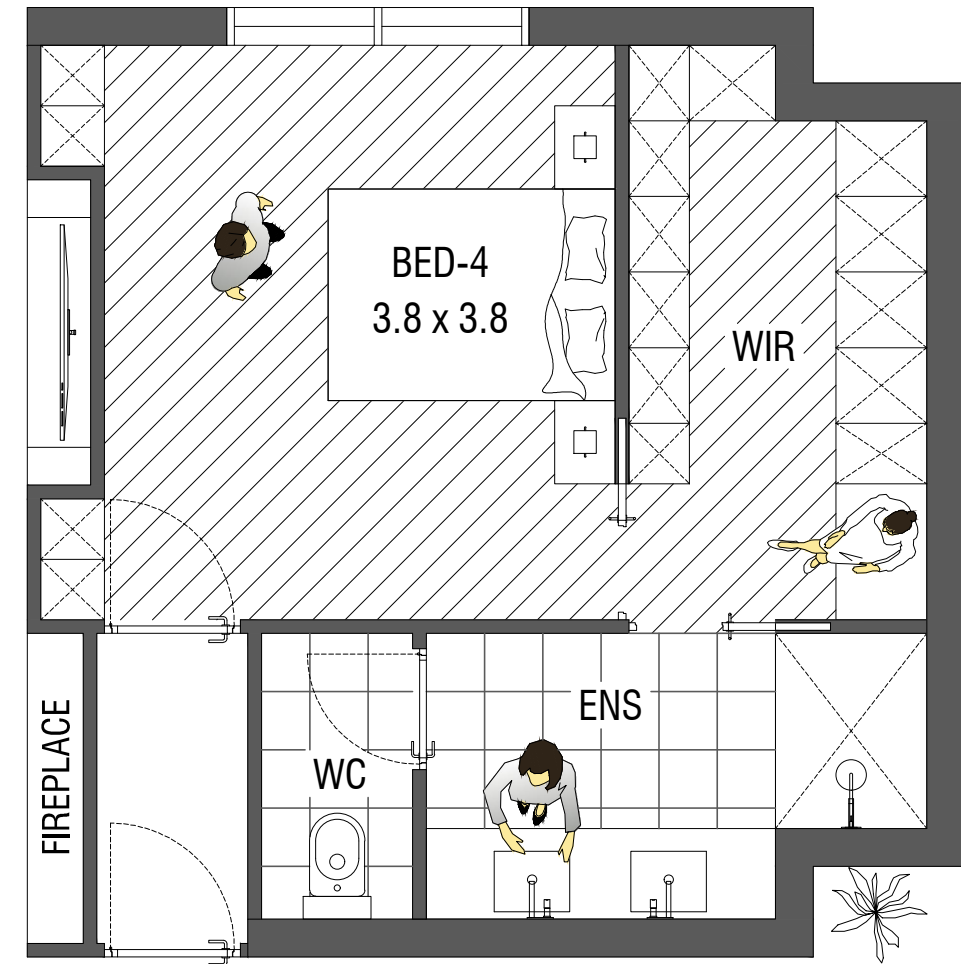
12 Dining
5000 x 2200

13 Living
5000 x 4000

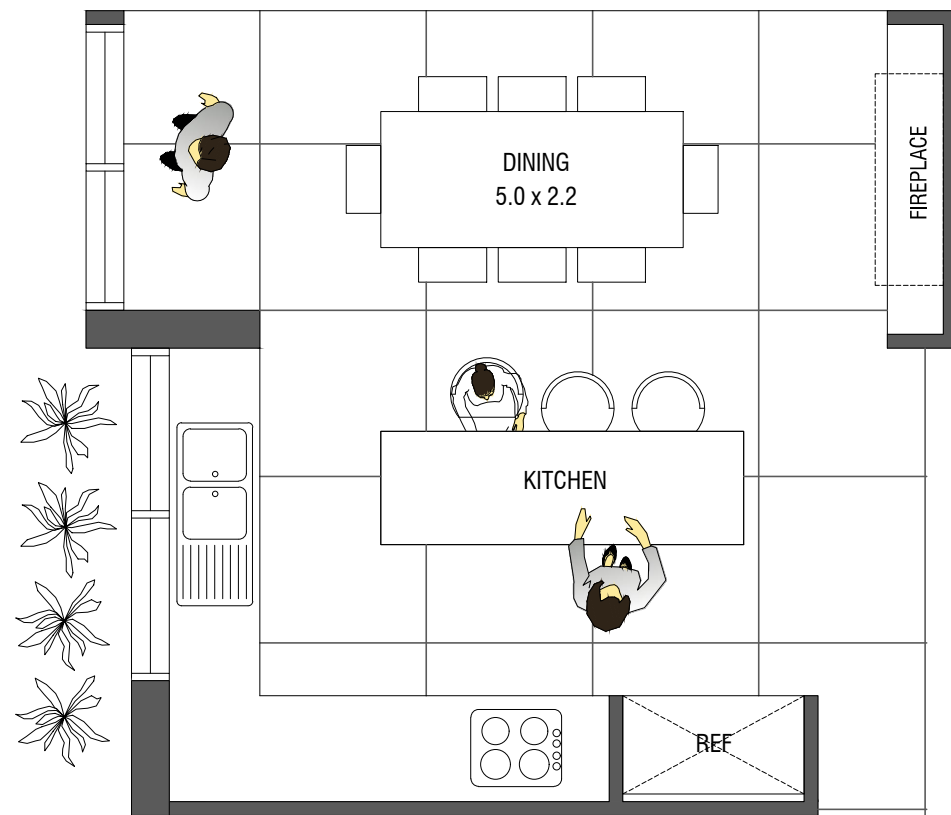
14 Master Bedroom
3800 x 3800

15 Ensuite

16 Backyard



MASTER BEDROOM PLAN



KITCHEN & DINING PLAN





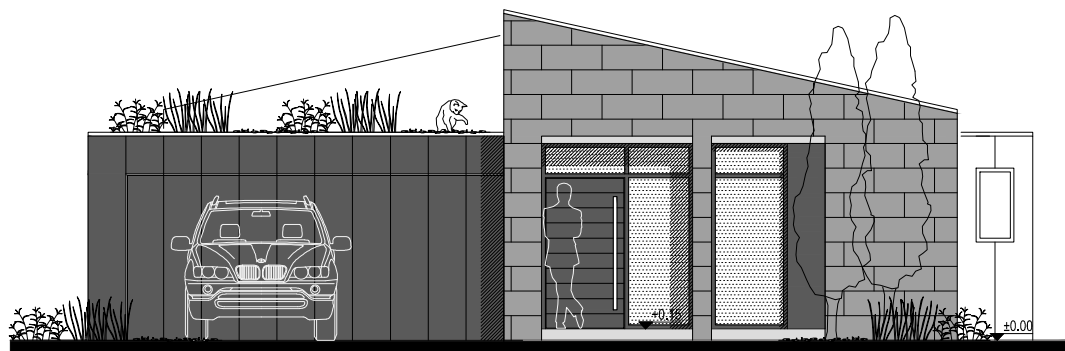
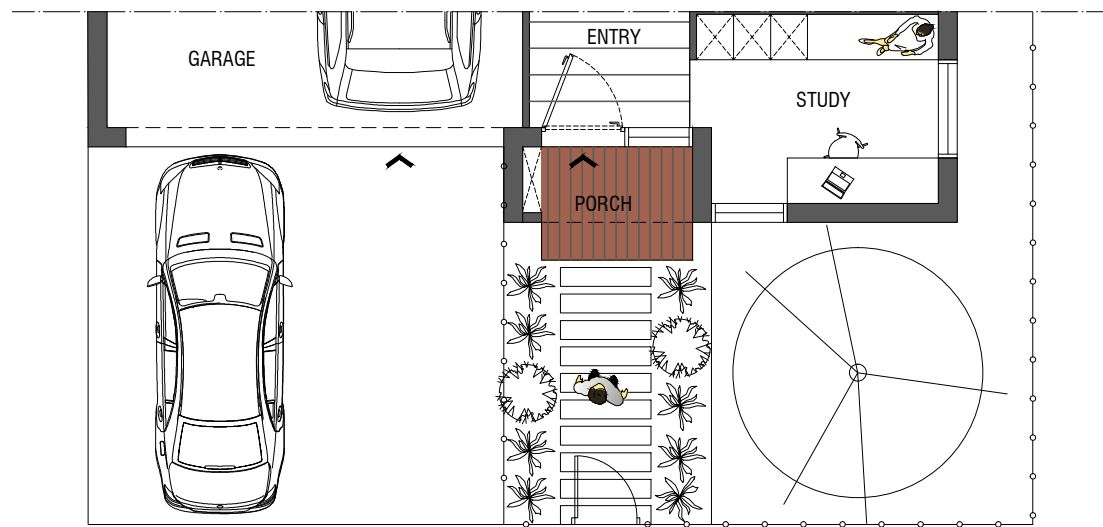
KAYA / 25

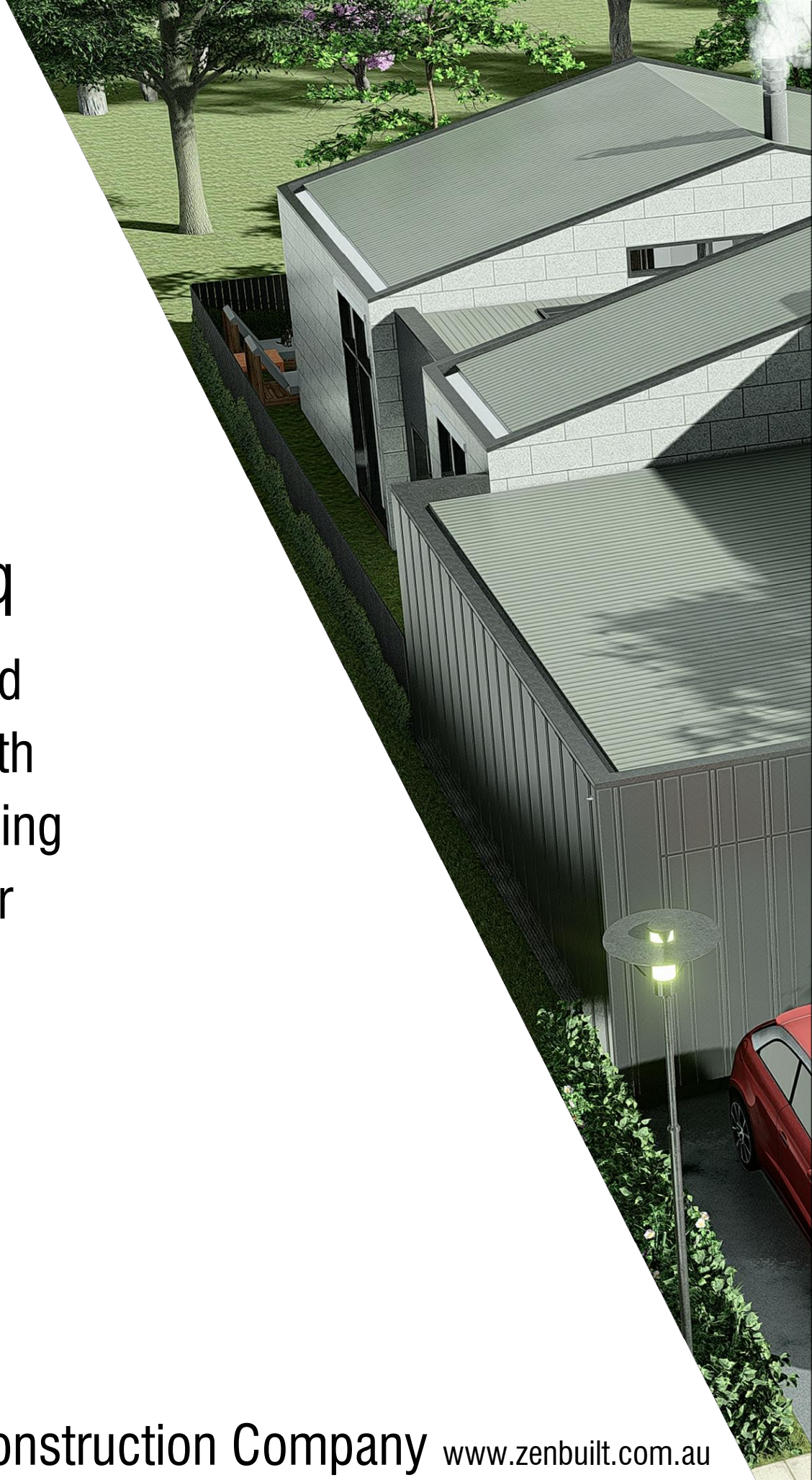


XAYGUN / 25



OZMAN / 25





25 Sq
4 Bed
2 Bath
1 Living
2 Car

Zen Built Construction Company www.zenbuilt.com.au

77A Matthews Avenue, Airport West
Melbourne, Victoria, AUSTRALIA